

Safari Shuffle

A Free Project Sheet
NOT FOR RESALE

Quilt 1



Quilt Design by Heidi Pridemore

2 ply
flannel

Skill Level: Advanced Beginner

facebook



Finished Quilt Size: 42" x 63"
49 West 37th Street, 14th floor, New York, NY 10018
Toll Free: 800-294-9495
fax: 212-679-4578
www.blankquilting.net

SAFARI SHUFFLE

Quilt 1

Finished Quilt Size: 42" x 63"

Fabrics in the Safari Shuffle Collection



24" Safari Panel - Lt. Blue
9160FP-70



Patch - Lt. Gray
9161F-90



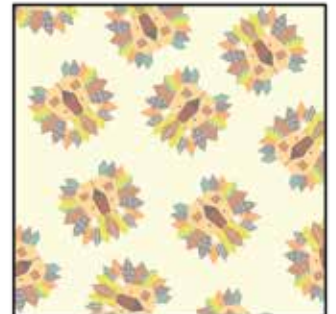
Stripe - Lt. Blue
9162F-70



Mixed Animals - Lt. Yellow
9163F-40



Mixed Animals - Dk. Gray
9163F-95



Lion Heads - Lt. Yellow
9164F-40



Lion Heads - Lt. Blue
9164F-70



Zebras - Yellow
9165F-44



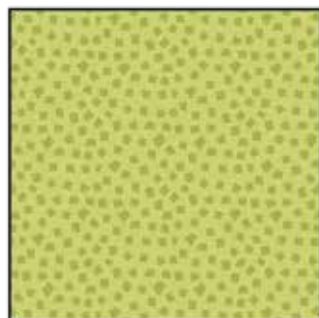
Zebras - Med. Blue
9165F-75



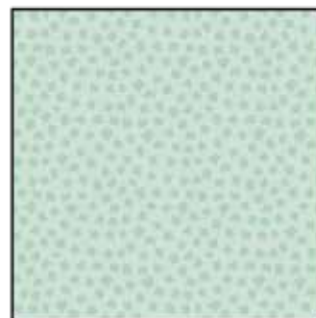
Monkeys - White
9166F-01



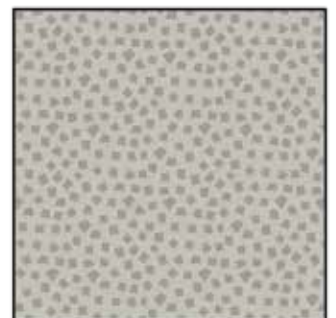
Monkeys - Lt. Gray
9166F-90



Square Texture - Green
9167F-60



Square Texture - Lt. Blue
9167F-70



Square Texture - Lt. Gray
9167F-90

Materials

1 panel	24" Safari Panel - Lt. Blue (A)	9160FP-70
½ yard	Square Texture - Green (B)	9167F-60
1 ⅛ yards	Square Texture - Lt. Gray (C)	9167F-90*
1 ¼ yards	Stripe - Lt. Blue (D)	9162F-70
⅓ yard	Square Texture - Lt. Blue (E)	9167F-70
¼ yard	Lion Heads - Lt. Blue (F)	9164F-70
¼ yard	Monkeys - White (G)	9166F-01
¼ yard	Zebras - Med. Blue (H)	9165F-75
¼ yard	Zebras - Yellow (I)	9165F-44
3 yards	Mixed Animals - Lt. Yellow (Backing)	9163F-40

*Includes binding

Cutting Instructions

Please note: all strips are cut across the width of fabric (WOF) from selvage to selvage edge unless otherwise noted.

From the 24" Safari Panel - Lt. Blue (A), fussy cut:

- (1) 22 ½" x 42 ½" panel.

From the Square Texture - Green (B), cut:

- (2) 3" x 42 ½" WOF strips, piece as needed.
- (2) 4" x 27 ½" WOF strips.

From the Square Texture - Lt. Gray (C), cut:

- (2) 4 ⅞" x WOF strips. Sub-cut (12) 4 ⅞" squares.
- (4) 1 ½" x 42 ½" WOF strips, piece as needed.
- (6) 2 ½" x WOF strips for the binding.

From the Stripe - Lt. Blue (D), cut:

- (2) 6" x 42 ½" Length of Fabric (LOF) strips.

From the Square Texture - Lt. Blue (E), cut:

- (2) 4 ⅞" x WOF strips. Sub-cut (12) 4 ⅞" squares.

From the Lion Heads - Lt. Blue (F), cut:

- (1) 4 ½" x WOF strip. Sub-cut (8) 4 ½" squares.

From the Monkeys - White (G), cut:

- (1) 4 ½" x WOF strip. Sub-cut (8) 4 ½" squares.

From the Zebras - Med. Blue (H), cut:

- (1) 4 ½" x WOF strip. Sub-cut (4) 4 ½" squares.

From the Zebras - Yellow (I), cut:

- (1) 4 ½" x WOF strip. Sub-cut (2) 4 ½" x 8 ½" strips.

From the Mixed Animals - Lt. Yellow (Backing), cut:

- (2) 50" x WOF strips for the backing. Sew the strips together and trim to make the 50" x 71" back.

Sewing Instructions

1. Sew (1) 3" x 42 ½" Fabric B strip to each side of the 22 ½" x 42 ½" Fabric A panel. Sew (1) 4" x 27 ½" Fabric B strip to the top and to the bottom of the Fabric A panel. Trim the block to measure 26 ½" x 48 ½" to make the Center Block (Fig. 1).

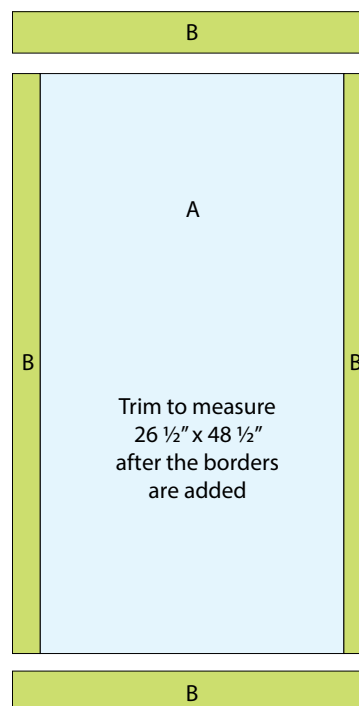


Fig. 1

2. Place (1) 4 ⅞" Fabric C square on top of (1) 4 ⅞" Fabric E square, right sides together. Draw a line across the diagonal of the top square (Fig. 2). Sew ¼" away from each side of the drawn diagonal line (Fig. 2). Cut the (2) squares apart on the drawn diagonal line (Fig. 3) to make (2) half-square triangles. Trim the blocks to measure 4 ½" square to make (2) Unit 1 blocks (Fig. 4). Repeat to make (24) Unit 1 blocks total.

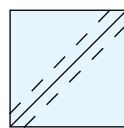


Fig. 2

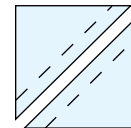


Fig. 3

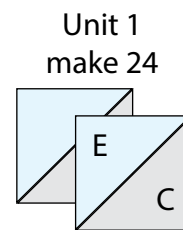


Fig. 4

3. Sew (1) 1 ½" x 42 ½" Fabric C strip to the top and to the bottom of (1) 6" x 42 ½" Fabric D strip to make (1) Top/Bottom Border (Fig. 5). Repeat to make a second Top/Bottom Border.

Quilt Top Assembly

(Refer to the Quilt Layout while assembling.)

4. Sew (2) 4 ½" Fabric F squares, (6) Unit 1 blocks, (2) 4 ½" Fabric H squares and (2) 4 ½" Fabric G squares together to make (1) Inside Border strip. Repeat to make a second Inside Border strip. Sew (1) Inside Border strip to each side of the Center Block.

5. Sew (6) Unit 1 blocks, (2) 4 ½" Fabric G squares, (2) 4 ½" Fabric F squares and (1) 4 ½" x 8 ½" Fabric I strip together to make (1) Outside Border strip. Repeat to make a second Outside Border strip. Sew (1) Outside Border strip to each side of the Center Block.

6. Sew (1) Top/Bottom Border to the top and to the bottom of the Center Block to make the quilt top.

7. Layer and quilt as desired.

8. Sew the (6) 2 ½" x WOF Fabric C strips together, end to end with 45-degree seams, to make the binding. Fold this long strip in half lengthwise with wrong sides together and press.

9. Bind as desired.

Top/Bottom Border
make 2

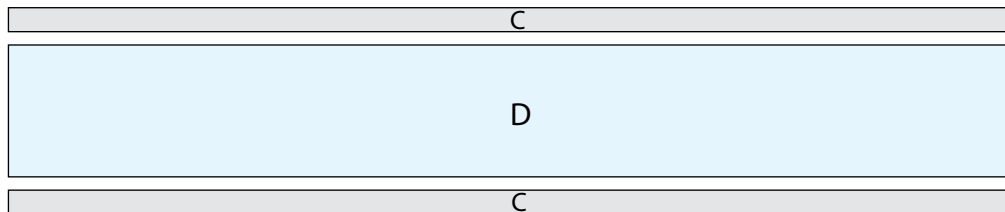
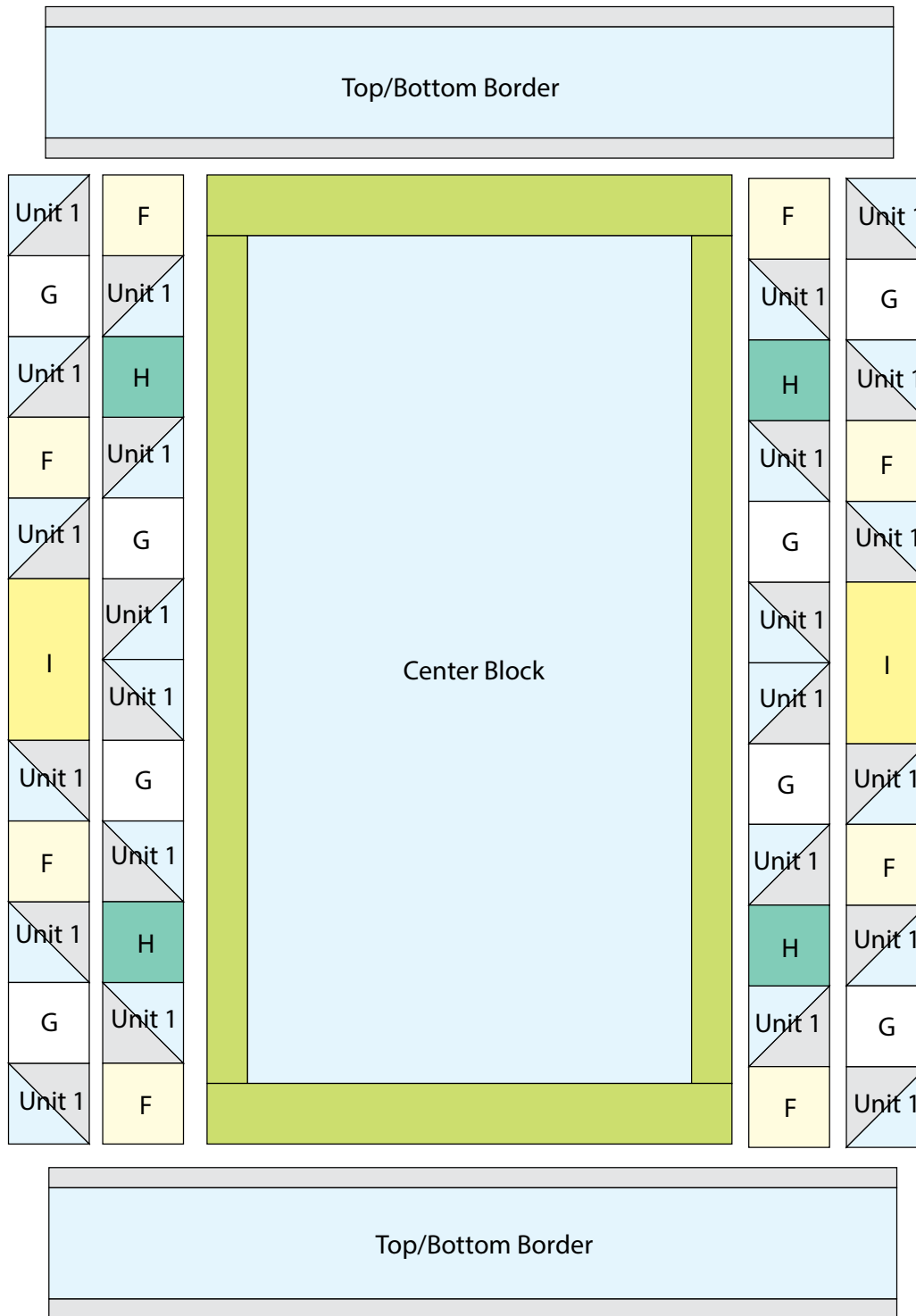


Fig. 5



Quilt Layout

Every effort has been made to ensure that all projects are error free. All the information is presented in good faith, however no warranty can be given nor results guaranteed as we have no control over the execution of instructions. Therefore, we assume no responsibility for the use of this information or damages that may occur as a result. When errors are brought to our attention, we make every effort to correct and post a revision as soon as possible. Please make sure to check www.blankquilting.net for pattern updates prior to starting the project. We also recommend that you test the project prior to cutting for kits. Finally, all free projects are intended to remain free to you and are **not for resale**.