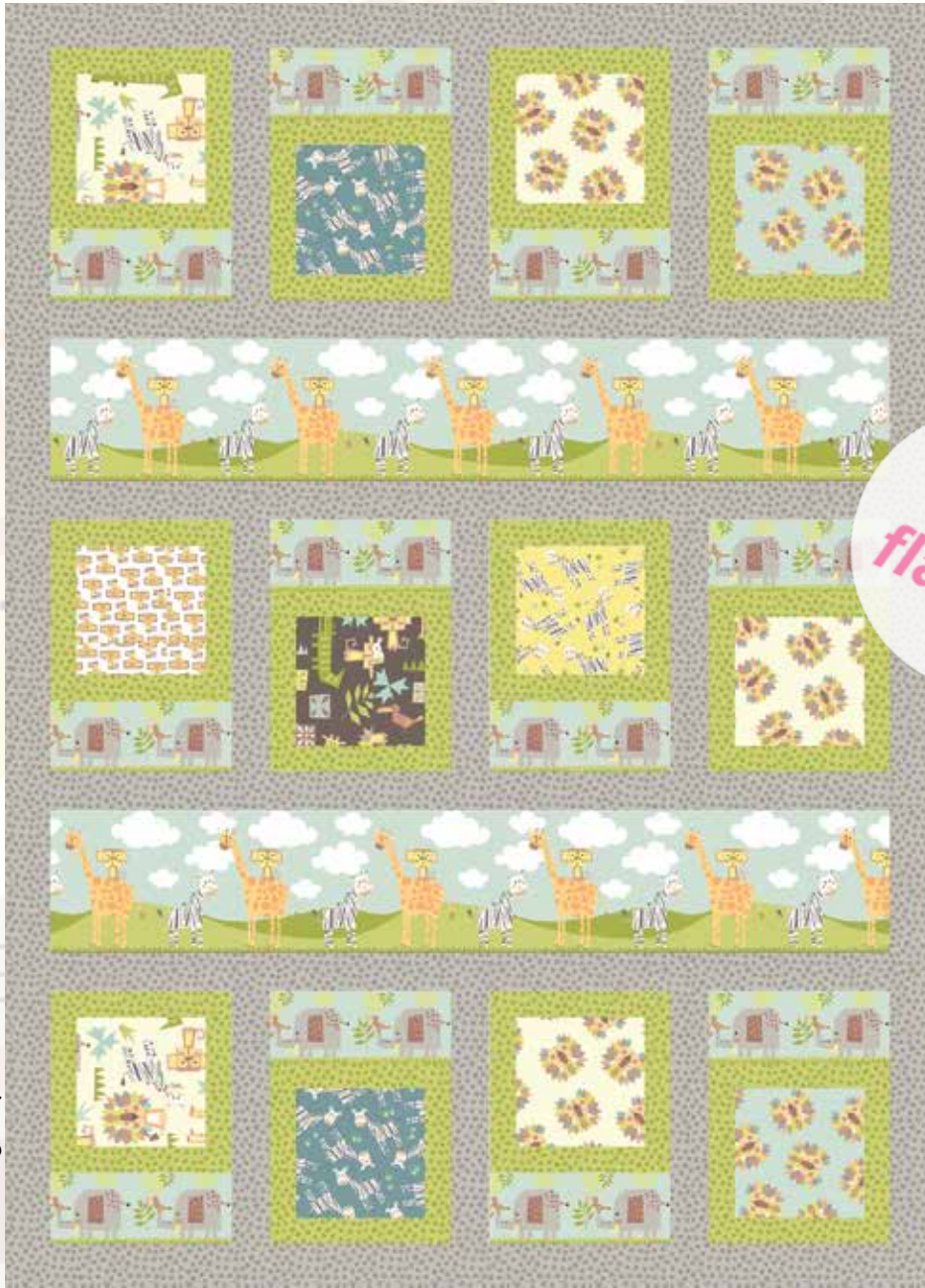


Safari Shuffle

A Free Project Sheet
NOT FOR RESALE

Quilt 2



2 ply
flannel

Quilt Design by Heidi Pridemore

Skill Level: Beginner



facebook

Finished Quilt Size: 35 1/2" x 49 1/4"
49 West 37th Street, 14th floor, New York, NY 10018
Toll Free: 800-294-9495
fax: 212-679-4578
www.blankquilting.net

SAFARI SHUFFLE

Quilt 2

Finished Quilt Size: 35 1/2" x 49 1/4"

Fabrics in the Safari Shuffle Collection



24" Safari Panel - Lt. Blue
9160FP-70



Patch - Lt. Gray
9161F-90



Stripe - Lt. Blue
9162F-70



Mixed Animals - Lt. Yellow
9163F-40



Mixed Animals - Dk. Gray
9163F-95



Lion Heads - Lt. Yellow
9164F-40



Lion Heads - Lt. Blue
9164F-70



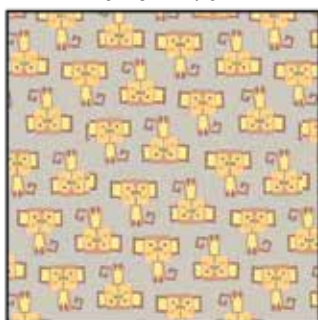
Zebras - Yellow
9165F-44



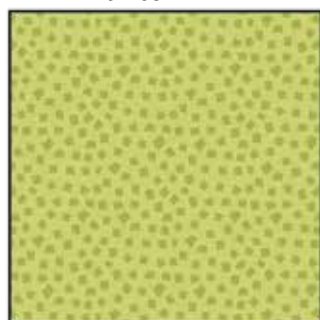
Zebras - Med. Blue
9165F-75



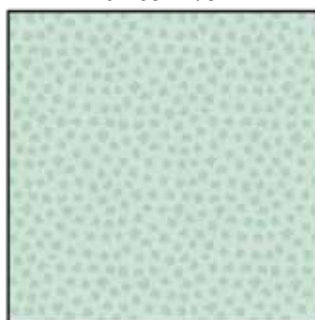
Monkeys - White
9166F-01



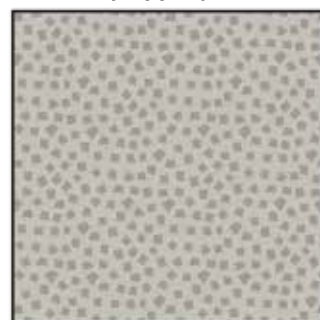
Monkeys - Lt. Gray
9166F-90



Square Texture - Green
9167F-60



Square Texture - Lt. Blue
9167F-70



Square Texture - Lt. Gray
9167F-90

Materials

¼ yard	Mixed Animals - Light Yellow (A)	9163F-40
1 yard	Stripe - Light Blue (B)	9162F-70
¼ yard	Zebras - Medium Blue (C)	9165F-75
¼ yard	Lion Heads - Light Blue (D)	9164F-70
¼ yard	Lion Heads - Light Yellow (E)	9164F-40
¼ yard	Monkeys - White (F)	9166F-01
¼ yard	Mixed Animals - Dark Gray (G)	9163F-95
¼ yard	Zebras - Yellow (H)	9165F-44
½ yard	Square Texture - Green (I)	9167F-60
1 ⅛ yards	Square Texture - Light Gray (J)	9167F-90*
2 ½ yards	Patch - Light Gray (Backing)	9161F-90

*Includes binding

Cutting Instructions

Please note: all strips are cut across the width of fabric (WOF) from selvage to selvage edge unless otherwise noted.

From the Mixed Animals - Light Yellow (A), cut:

- (1) 5 ½" x WOF strip. Sub-cut (2) 5 ½" squares.

From the Stripe - Light Blue (B), cut:

- (2) 6" x 33" Length of Fabric (LOF) strips, each centered on the wide strip with giraffes.
- (12) 3 ¼" x 7 ½" LOF strips, each centered on the narrow strip with elephants.

From the Zebras - Medium Blue (C), cut:

- (1) 5 ½" x WOF strip. Sub-cut (2) 5 ½" squares.

From the Lion Heads - Light Blue (D), cut:

- (1) 5 ½" x WOF strip. Sub-cut (3) 5 ½" squares.

From the Lion Heads - Light Yellow (E), cut:

- (1) 5 ½" x WOF strip. Sub-cut (2) 5 ½" squares.

From the Monkeys - White (F), cut:

- (1) 5 ½" square.

From the Mixed Animals - Dark Gray (G), cut:

- (1) 5 ½" square.

From the Zebras - Yellow (H), cut:

- (1) 5 ½" square.

From the Square Texture - Green (I), cut:

- (5) 1 ½" x WOF strips. Sub-cut strips into (24) 1 ½" x 7 ½" strips.
- (4) 1 ½" x WOF strips. Sub-cut strips into (24) 1 ½" x 5 ½" strips.

From the Square Texture - Light Gray (J), cut:

- (6) 2" x 36" WOF strips.
- (4) 2" x WOF strips. Sub-cut (15) 2" x 10 ¼" strips.
- (1) 2" x WOF strip. Sub-cut (4) 2" x 6" strips.
- (5) 2 ½" x WOF strips for the binding.

From the Patch - Light Gray (Backing), cut:

- (2) 44" x WOF strips for the backing. Sew the strips together and trim to make the 44" x 58" back.

Sewing Instructions

1. Sew (1) 1 ½" x 5 ½" Fabric I strip to each side of (1) 5 ½" Fabric A square. Sew (1) 1 ½" x 7 ½" Fabric I strip to the top and to the bottom of the Fabric A square to make (1) Block One square (Fig. 1). Repeat to make a second Fabric A square.

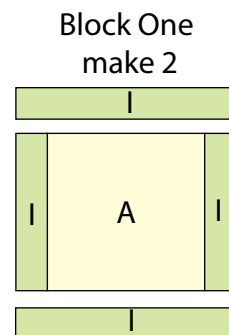


Fig. 1

2. Repeat Step 1 and use Figures 2 through 7 for fabric identification and location to make (2) Block Two squares, (3) Block Three Squares, (2) Block Four squares, (1) Block Five square, (1) Block Six square and (1) Block Seven square.

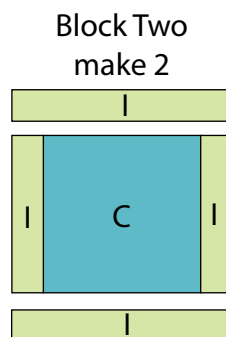


Fig. 2

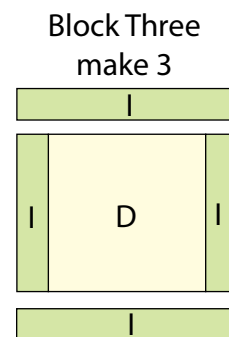


Fig. 3

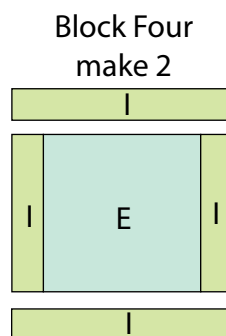


Fig. 4

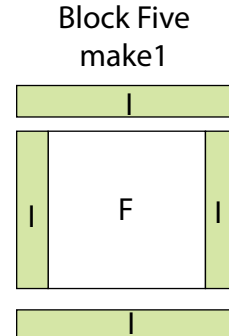


Fig. 5

Block Six
make 1

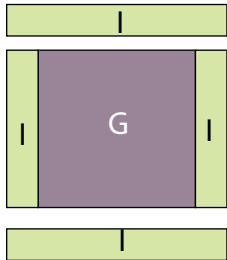


Fig. 6

Block Seven
make 1

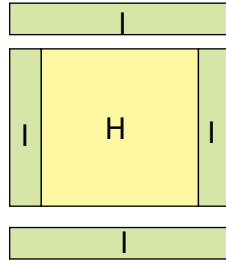


Fig. 7

3. Sew (1) 2" x 6" Fabric J strip to each side of (1) 6" x 33" Fabric B strip. Sew (1) 2" x 36" Fabric J strip to the top and to the bottom of the Fabric B strip to make (1) Block Eight strip (Fig. 8). Repeat to make a second Block Eight strip.

Quilt Top Assembly

(Refer to the Quilt Layout while assembling.)

4. Sew (5) 2" x 10 1/4" Fabric J strips, (4) 3 1/4" x 7 1/2" Fabric B strips, (1) Block One square, (1) Block Two square, (1) Block Three square and (1) Block Four square together to make Row One. Repeat to make Row Three.

5. Sew (5) 2" x 10 1/4" Fabric J strips, (4) 3 1/4" x 7 1/2" Fabric B strips, (1) Block Five square, (1) Block Six square, (1) Block Seven square and (1) Block Three square together to make Row Two.

6. Sew Row One, (1) Block Eight strip, Row Two, (1) Block Eight strip and Row Three together lengthwise and in that order to make the Center Block.

7. Sew (1) 2" x 36" Fabric J strip to the top and to the bottom of the Center Block to make the quilt top.

8. Layer and quilt as desired.

9. Sew the (5) 2 1/2" x WOF Fabric J strips together, end to end with 45-degree seams, to make the binding. Fold this long strip in half lengthwise with wrong sides together and press.

10. Bind as desired.

Block Eight
make 2

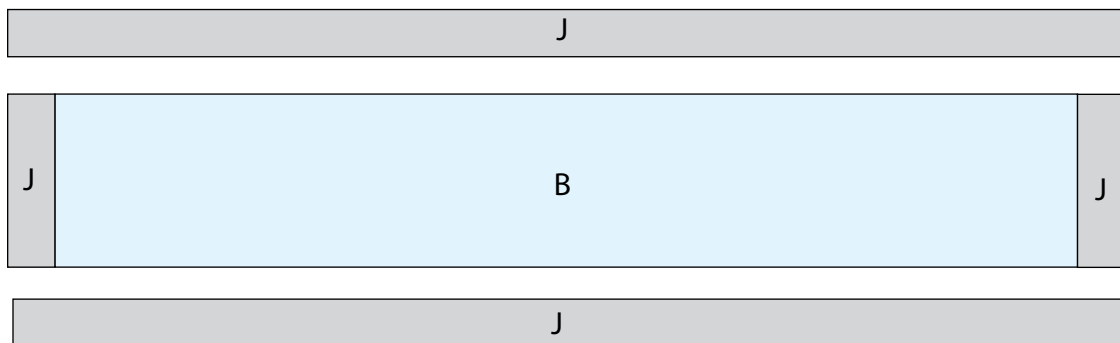
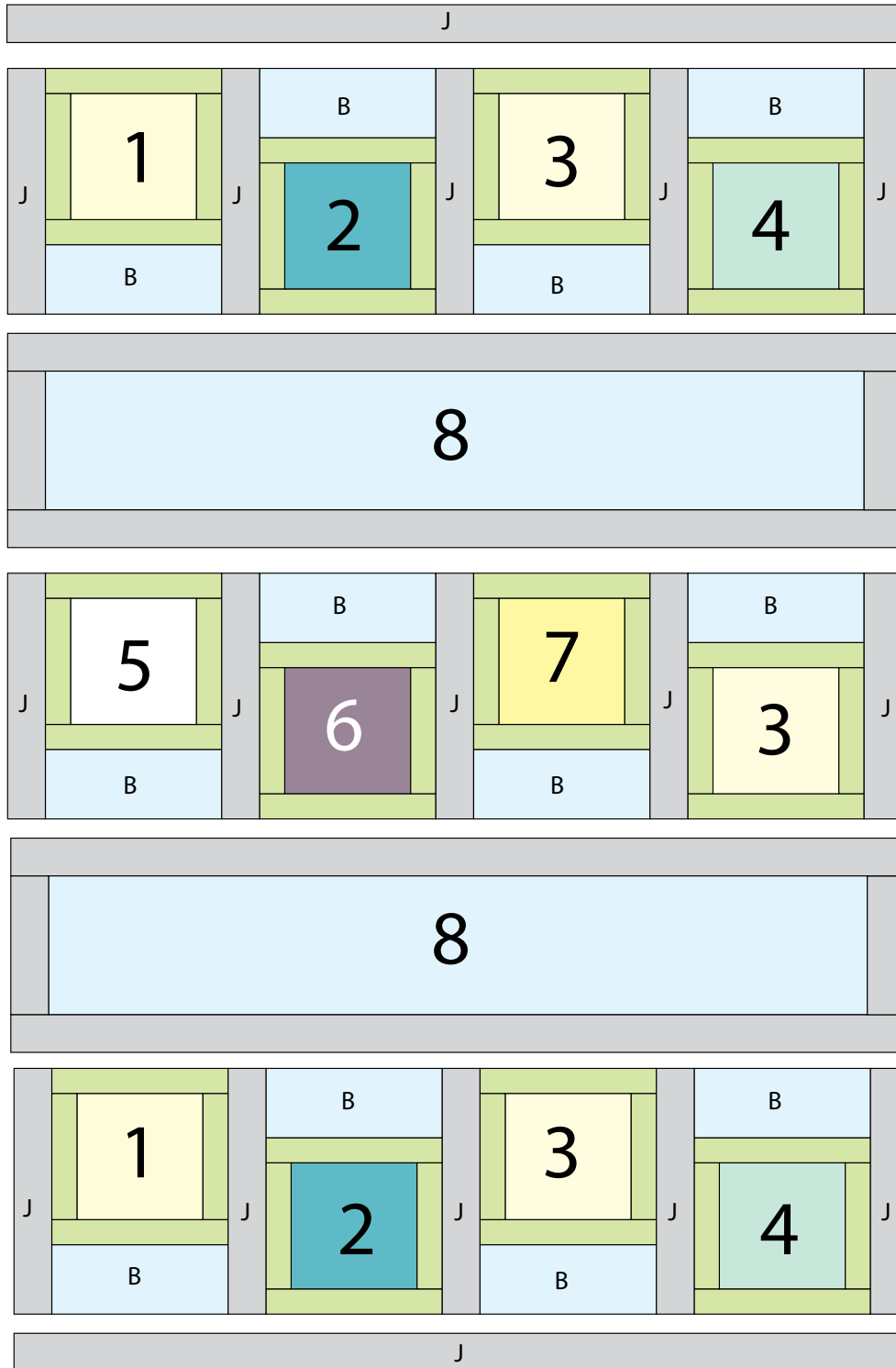


Fig. 8



Quilt Layout

Every effort has been made to ensure that all projects are error free. All the information is presented in good faith, however no warranty can be given nor results guaranteed as we have no control over the execution of instructions. Therefore, we assume no responsibility for the use of this information or damages that may occur as a result. When errors are brought to our attention, we make every effort to correct and post a revision as soon as possible. Please make sure to check www.blankquilting.net for pattern updates prior to starting the project. We also recommend that you test the project prior to cutting for kits. Finally, all free projects are intended to remain free to you and are **not for resale**.